



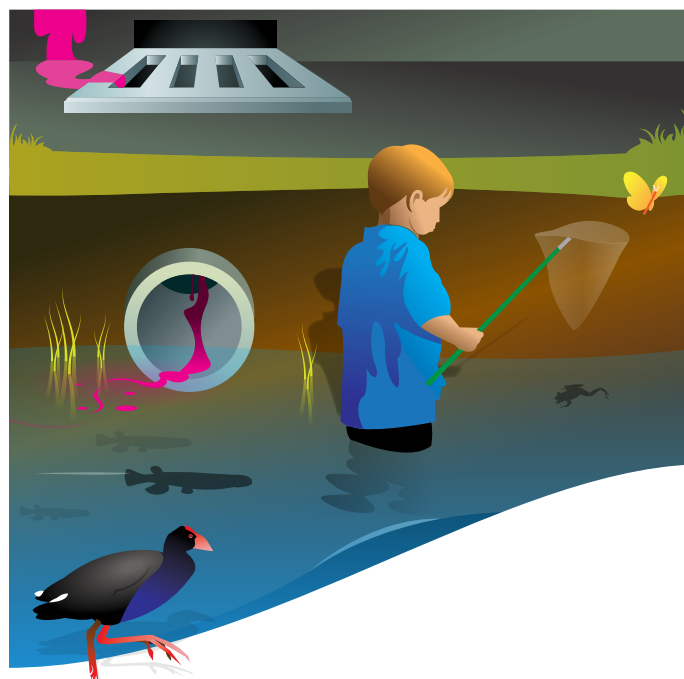
Omaru creek business pollution prevention

The Omaru Creek is one of the longest streams in central Auckland. The stream runs from College Road, through Glen Innes and then discharges out to the Tamaki Estuary and eventually the Waitemata Harbour. It is particularly important because it has escaped being piped.

Unfortunately, the stream is one of the most polluted in Auckland and at one time was ranked the second most polluted waterway in New Zealand. A significant source of this pollution is stormwater runoff from industrial sites.

In response to the poor results of stream monitoring, the Maungakiekie-Tamaki Local Board is working with community groups, local schools and businesses to improve the health of the stream.

As a local business in the catchment of the stream you have an opportunity to help protect and improve the quality of the Omaru Creek.

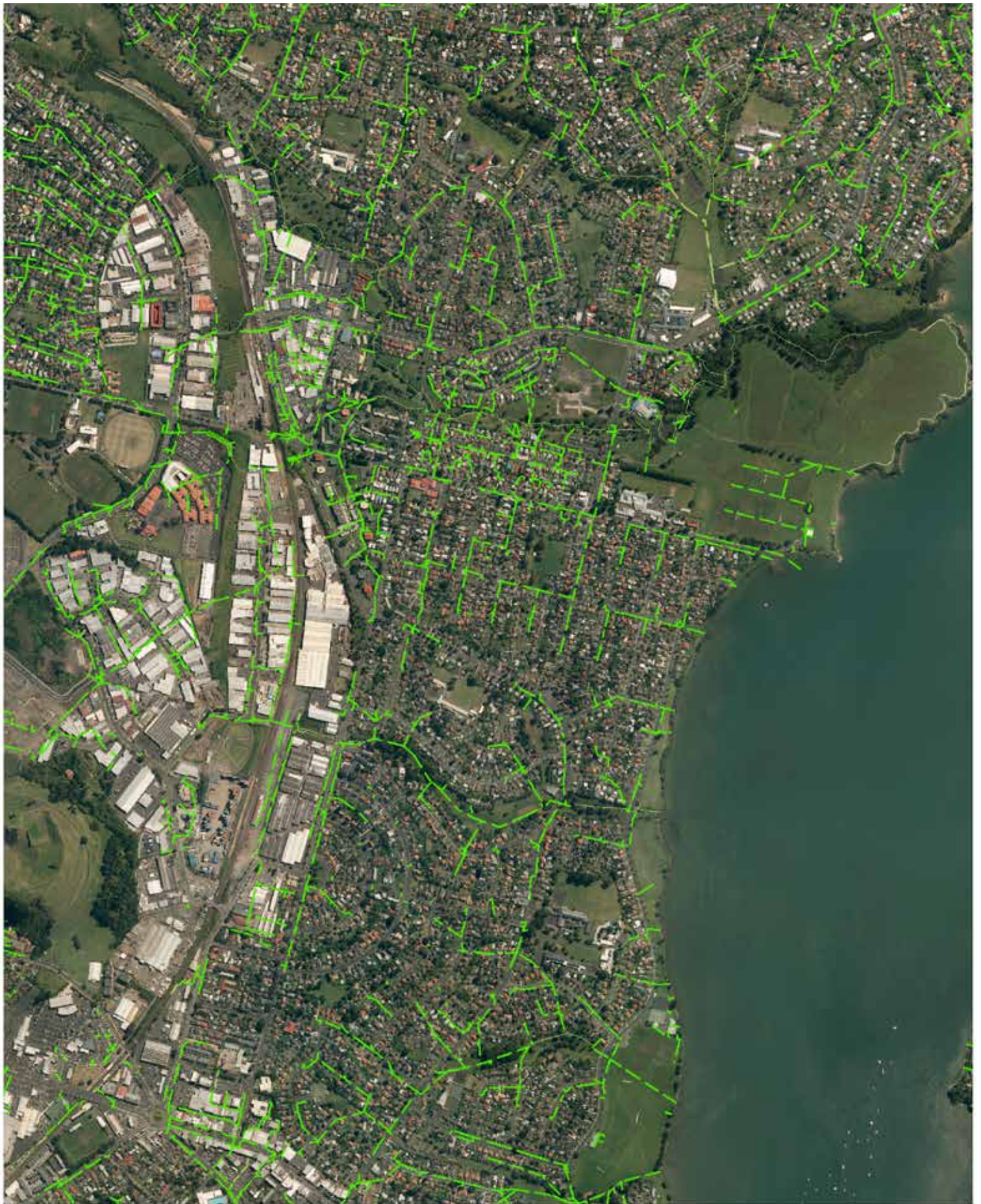


What you can do to help

Rainwater from your site enters stormwater drains and flows to the Omaru Creek and then the Tamaki Estuary. Any pollution on your site flows with this rainwater and pollutes the stream and sea.

The Local Board is working with businesses in the area to stop stormwater pollution. Please play your part by putting in place recommended ways to stop pollution. Ensure areas of your site that flow to stormwater drains are kept free of pollution.

Your efforts, together with the rest of our local community, will help to improve the Omaru Creek and protect our beaches and our fishing resources.



This map/plan is illustrative only and all information should be independently verified on site before taking any action. Copyright Auckland Council. Boundary information from LINZ (Crown Copyright Reserved). Whilst due care has been taken, Auckland Council gives no warranty as to the accuracy and completeness of any information on this map/plan and accepts no liability for any error, omission or use of the information. Height datum: Auckland 1946.

Glen Innes

STORMWATER LINE

SCALE @ A4 1:15000
CREATED: 7 MAY 2013



**Auckland
Council**

Te Kaunhera o Tamaki Makaurau