

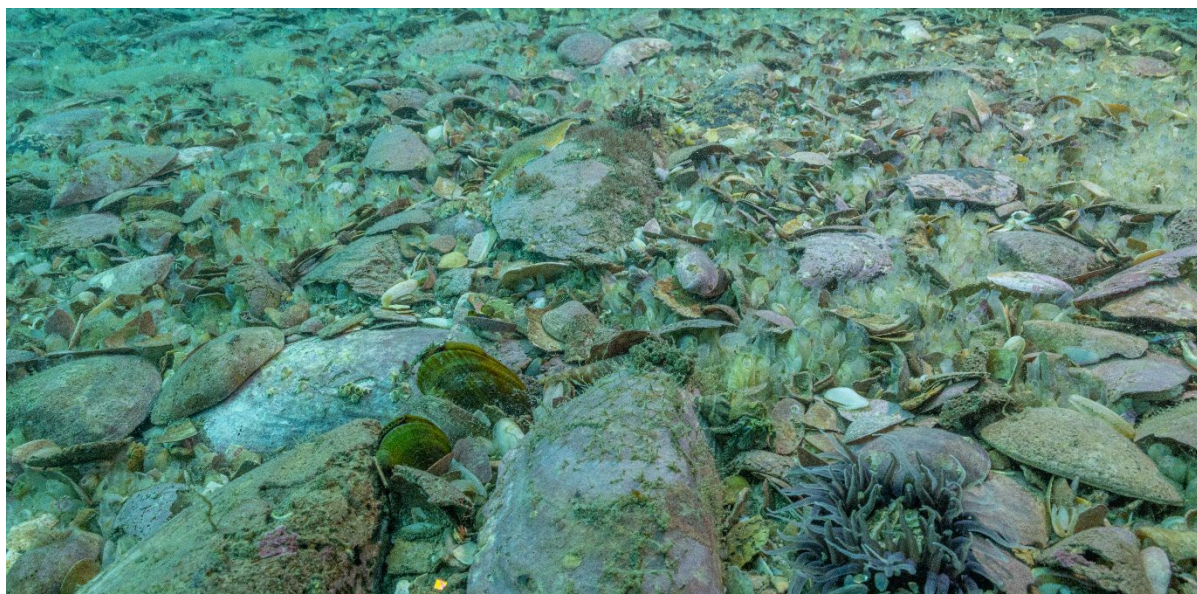
## Supporting Patuharakeke Hapū's request to extend the Section 186A Closure on Mair and Marsden Banks, Marsden Point to the harvesting of ALL SHELLFISH.

Stet Limited 10 April 2026

We support Patuharakeke Hapū's request to extend the Section 186A Closure on Mair and Marsden Banks, Marsden Point to the harvesting of ALL SHELLFISH.



Image taken onsite January 2018 <https://blog.shaullee.co.nz/natural-mussel-recruitment/>  
Photo by Shaun Lee.



Juvenile pipi and kūtai growing growing adjacent to a tiny Rāhui / Section 186 closure in Ōhiwa Harbour. Photo by Shaun Lee.

1. **Ecological significance:** Soft sediment kūtai beds, once prevalent across the Hauraki Gulf Marine Park are now extinct due to overfishing. Mair and Marsden Banks stands as a rare success story in natural mussel bed recovery, offering invaluable insights into ecosystem restoration processes. The area has contributed to the body of knowledge on mussel bed restoration and providing a reference model.
2. **Advocacy contribution:** The recovery of the mussel beds at Mair and Marsden Banks has sparked widespread interest and support for mussel reef restoration across New Zealand via photography taken by myself. The images have been included in many academic presentations and public awareness campaigns to engage the public in marine restoration.
3. **Future research:** Factors driving ongoing recruitment of kūtai at this site are unknown and require further research. The population is fragile and a fisheries closure would aid understanding to restore soft sediment beds nationwide. Harvesting of any shellfish in the area puts pressure on the small patches of recovering kūtai beds.
4. **Timeframe:** The timeframe for the proposed closure illustrates that the current two-year legislative period is insufficient for the recovery of marine ecosystems; therefore, the legislation needs to be amended to extend this timeframe and remove the inefficient requirement for frequent reapplications.

Thank you for considering our recommendations.

Shaun Lee  
*Director*  
Stet Limited  
[shaun@stet.co.nz](mailto:shaun@stet.co.nz)