



Oakley Creek Pollution Prevention

Oakley Creek, Te Auaunga, is a very important stream in central Auckland. Rainwater from your site enters stormwater drains and flows to Oakley Creek.

Did you know, Oakley Creek:

- Is Auckland's longest urban stream – some 16 km
- Starts in Mt Roskill and winds its way to the Waitemata Harbour at Waterview
- Has more than 11 different species of native fish living in it
- Flows through 4 wetland areas
- Takes rainwater from a 12 km² catchment
- Has Auckland City's only waterfall

In recent years a lot of work has gone into enhancing the natural habitat of Oakley Creek and improving public walkways along its length.

The Puketapapa Local Board is working with community groups and businesses on projects that aim to improve the water quality and habitat of Oakley Creek.

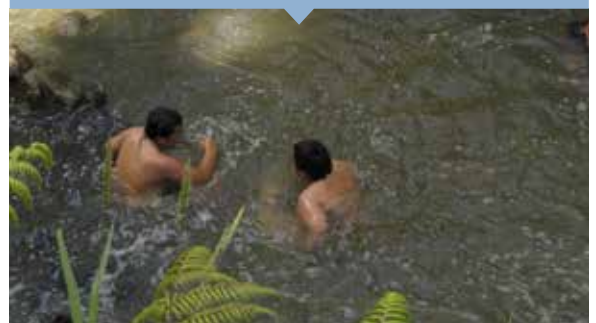
What you can do to help

As a local business in the Oakley Creek catchment you have an opportunity to help protect and improve the quality of this unique local environment.

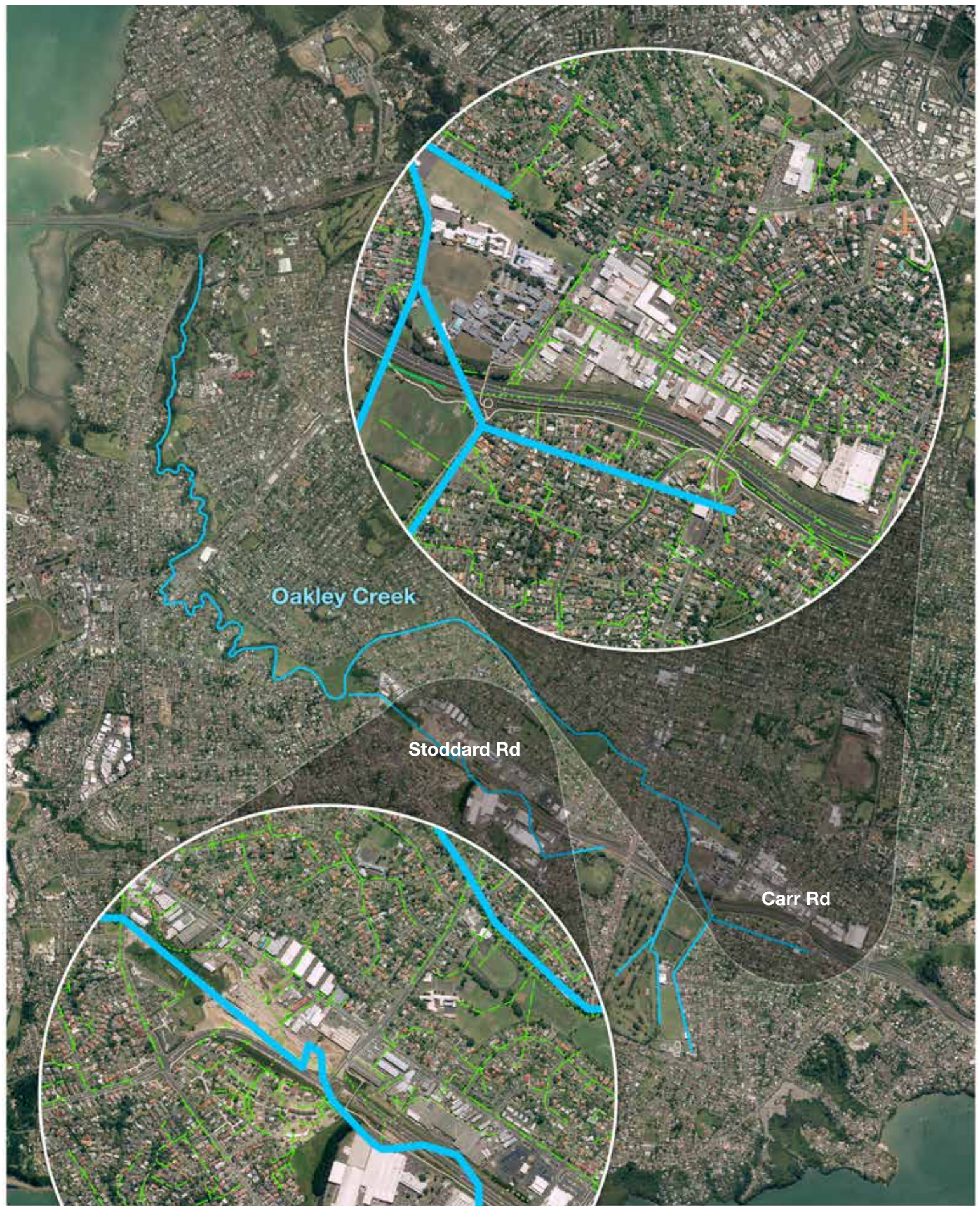
Any pollution on your site flows with rainwater and pollutes Oakley Creek and, eventually, the sea. Ensure areas of your site that flow to stormwater drains are kept free of contaminants, and that you have a plan in the event of a spill on your site.

Your efforts, together with the rest of our local community, will help to improve Oakley Creek, and protect our beaches and fishing resources. If you would like to help even more, with projects such as tree planting, you could contact Friends of Oakley Creek. www.oakleycreek.org.nz.

Call the Pollution Hotline on (09) 377 3107 to report pollution incidents 24 hours a day 7 days a week



The Puketapapa Local Board have funded this project as part of their commitment to improving the water quality in Oakley Creek. The Board has contracted Wilkinson Environmental Ltd to deliver this programme.



Oakley Creek

Stoddard Rd

Carr Rd